

JK Cement جي. كي. أسمنت ورکس (الفجيرة) ش م ح
Works (FUJAIRAH) FZC

JK WALL PUTTY



■ PROTECTION ■ DURABILITY ■ WHITENESS

Certified to :

ISO 9001 (QMS) & ISO 14001 (EMS)
OHSAS 18001 & SA 8000



www.jkcementuae.com



JK WALL PUTTY

- JK WALL Putty is a white cement based fine powder which provides an ideal finishing for concrete / cement plastered walls and ceiling.
- It provides an ideal base for painting.
- It provides damp resistant smooth finish for further application of all kinds of paints. (Damp resistance means resistance to water in humid air & not physical water contacts / leakages).
- It gives pleasing look to interiors & exteriors.
- It is fine powder to be mixed with water as advised for direct application on plastered surface of the interiors / exteriors to get silky and shiny finish.
- Can be used concrete, rendered wall, hollow block, precast walls, concrete ceilings, calcium silicate bricks & aerated light weight blocks.
- Not recommended for use on painted or other non-cementitious surfaces.

SURFACE PREPARATION

New surface

New surface requires preparation such as removal of dust, dirt and foreign matter. In case of cracks, voids & damages it should be repaired. Surfaces should be in just-wet condition, prior to putty application.

Old Unpainted Surface

All loose material, organic growth, dirt, dust, etc. must be removed with steel blade or wire brush. Surface should be in just-wet condition, prior to putty application.

Old Painted Surface

Scrub the surface with coarse wire brush / sand paper and clean thoroughly so that it is free from old paint / dust particles till the cementitious / plastered surface is seen. Surface could be washed with water, however ensuring that surface should be in just-wet condition, prior to putty application.

Very Rough Surface

If surface plaster was rough, 1st apply white cement / white cement mortar and level the surface. Cure the surface for 2 days, before starting putty coat. Surface should be in just-wet condition, prior to putty application.

Very Smooth Surface

If the surface was made by cement ghutai (smoothing) which normally is very smooth, bonding with putty may not become sufficiently strong. Scraping the surface with emery stone/paper is recommended before putty application. Surface should be in just-wet condition, prior to putty application.

Area near the skirting

Extra care is recommended for the area adjacent to skirting of the floor (at least area up to one feet above the skirting). During grinding of the skirting and floor, slurry is generated. It sticks to the wall and if not cleaned properly, wall putty on it will not give good results. Chances of flaking/poor adhesion. Area at least up to one feet above the skirting should be cleaned with wire brush and washed thoroughly so that slurry deposited on the wall during grinding is totally removed. After drying the wall, putty can be applied as normal.

Plaster showing sign of Efflorescence / salt deposition

If due to salty water or salts in sand/bricks, problem of efflorescence is observed then plastered surface should be treated with mild acid like citric acid before application of J.K. Wall putty. Otherwise, wall putty will not stick to the wall and problem of flaking may arise. After 30 minutes of treating the surface with mild acid, surface should be washed thoroughly so that no acid remains on the wall. After drying properly, wall putty can be applied as normal. This treatment should be done under proper supervision.

* just-wet condition could be achieved by applying coat of water with soft brush.

** In case of wall exposed to sun, more water spraying shall be done to take away heat from the surface and then bring wall to just-wet condition.

PREPARATION OF J.K. WALL PUTTY PASTE

- Take required quantity of J.K. Wall Putty in a pan.
- Mix half of required water quantity into it.
- Knead/Mix the Putty & wait for few minutes.
- Mix remaining quantity of water to get desired consistency.
- @ 35-40% water by volume is required to prepare paste of good consistency.
- Mix vigorously for 5-10 minutes for making lump free and uniform paste, as shown.
- Product should be mixed in such quantities that it could be used within 2 hrs of its preparation.
- Mixing could be done manually or by suitable electric mixer.



COVERAGE

We recommend:

- Maximum two coats (Layers) of J.K. Wall Putty.
- Maximum thickness of 1st coat (Layer) 1.5 mm.
- Maximum thickness of 2nd coat (Layer) 1.0 mm.
- Approx achievable coverage is 35 sqft./mm thickness /kg of J.K. wall putty.
- For recommend thickness above, the coverage achievable is @ 14 sq.ft/kg of j.k. wall putty. Or 280 sq. ft / 20 kg. bag of J.K. Wall Putty. However, actual coverage achieved depends on the base surface condition & finished thickness.

APPLICATION

- Ensure that surface is plastered OR made with cementitious material.
- Ensure that surface is totally clean.
- Ensure that surface is moderately rough (neither too-rough not too-smooth).
- Ensure that surface is just-wet. Over-wetting resulting in accumulation of water on surface should be avoided.
- Apply first coat. Use spatula/blade/trowel on the wall with "bottom to top" Configuration.
- Apply second coat preferably after @ 4 hrs in hot season & after @ 12 hrs in cold season. Second coat shall be applied "horizontally" to even out application marks of 1st coat, if any.
- Re-mix putty paste again for @ 1 minute, if it is left un-disturbed for @ 30 minutes.
- Allow complete drying for @ 3 days and then use fine emery paper to remove application mark, if any
OR
- Half an hour after application of 2nd coat smoothing could be done with trowel.
- Paint could be done after 3 or more days of putty work but it shall be ensured that putty is completely dry before applying paint.
- Clean application tools with clean water.



PRECAUTION

- Although J.K. Wall Putty do not contain any toxic material, use rubber gloves while mixing.
- Precaution should be taken to avoid dust inhalation while handling putty powder or during removal of application marks with fine emery paper-say wearing nose mask.
- Keep the product out of reach of children.
- Once putty paste has hardened, it shall not be used by adding water.

WETTING

Usual curing with lot of water is not needed. Keeping in view the ambient temperature, need based wetting is recommended.

- Just-wet the surface, prior to putty application.
- After applying first coat wet the surface gently.
- After application of second coat, wet surface twice a day for at least one day, if season demands it. Water shall be applied gently.

STORAGE

- Store J.K. Wall Putty in a dry place.
- Open the bag just before use.

SALIENT FEATURES OF J.K. WALL PUTTY

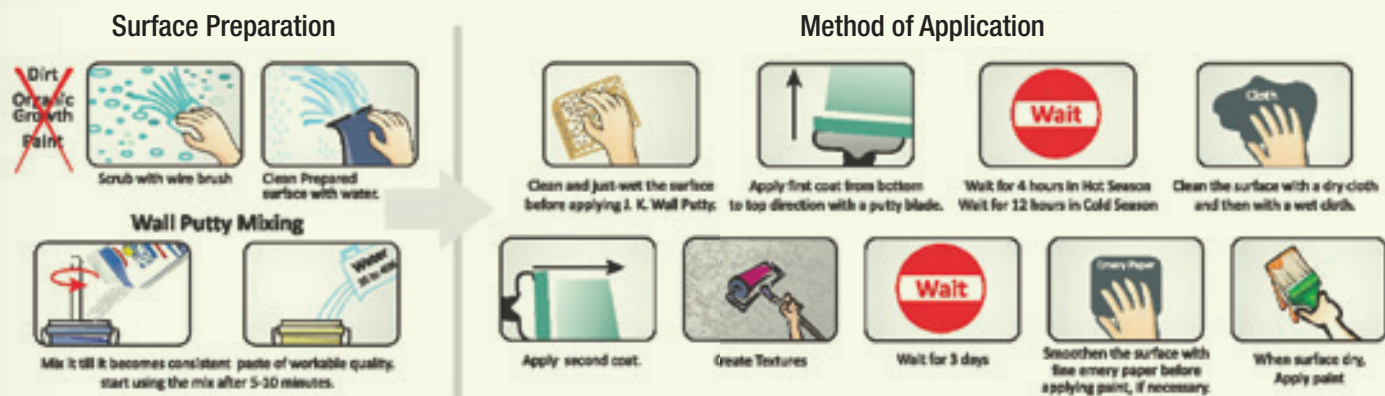
- We do not recommend mixing of pigments / stainer in J.K. Wall Putty.
- Quality of painted surface is directly proportional to quality of

un-painted surface. J.K. Wall Putty renders ideal condition as un-painted surface for paint application.

- Paint can be applied on J.K. Wall putty with or without primer. However, use of primer shall give cost advantage in case of expensive paints.
- Lustrous white and smooth surface which can be left un-painted.
- Life of J.K. Wall Putty is as long as the life of grey cement plaster underneath.
- It prevents growth of algae and fungus on walls.
- Any kind of distemper can be applied on it directly.
- Textured finish can be obtained by use of texturing tools.
- As prevalent in case of other non-cement putties, primer application is not recommended before J.K. Wall Putty application. This saves cost.

PACKAGING

- 1kg P.P. packets put in 20 kgs secondary HDPE bag for ease of handling.
- 5kg packs put in 20 kg secondary HDPE bag for ease of handling.
- 20 kg laminated P.P. bag.
- 40 kg laminated P.P. bag.



Standards Compliance :

- ASTM C191
- ASTM C948
- ASTM C348
- ASTM C349
- ASTM D4541
- ASTM C1794
- USEPA 24

Technical parameters :

Appearance	White Color Powder
Wet Density (Kg/M3)	1670
Setting Time	6 - 12 Hours
Flexural Strength	3.13 N/mm2
Compressive Strength	10 N/mm2
Pull-Off Strength	0.63 N/mm2



APPLICATION TOOLS (FOR APPLICATION & TEXTURES)



PERFORMANCE AT A GLANCE

Properties	J.K. Wall Putty	Traditional Putty	POP
Area of Application	Can be applied on exterior / exposed surface / interior / ceiling	Can't be applied on exterior / exposed surface.	Can't be applied on exterior / exposed surface
Binding Property	Cement based putty, hence good binding property.	Very low binding property due to use of chalk powder.	Low binding property.
Coverage Area	14 Sq. ft / kg. on new smooth plastered wall for finished thickness.	@ 10 sq.ft / kg for equivalent thickness.	6-7 sq. feet / kg for equivalent thickness.
Consistency	Consistency in quality as it is Factory made with standard ingredients & continuous quality control.	Large variation in properties. Quality of ingredients varying from area to area.	Huge variation in quality
Consumption of Distemper	Less Distemper is required because of its low absorption.	Requires more Distemper because of high absorption.	Requires more Distemper because it's absorption is more.
Cost	Less ultimate cost due to long life span, No primer cost, low paint absorption.	Ultimate cost is high.	Ultimate cost is quite high.
Durability	More durable due to good binding property.	Less durable	Less durable
Look	Better appearance due to very high whiteness (Min 93%) of putty.	Appearance is not like JKWP due to its yellowish base.	Yellow surface is achieved
Primer coat on base surface	No requirement of Primer Coat	Primer coat application is a must	Primer coat is a must
Strength	High like cement	Low strength	Very low strength
Water Resistance	good resistance to dampness	It doesn't resist dampness	Peels off when comes in contact with water

Note : Information given in this booklet is for general guidance. Specific instruction for various site conditions can be furnished on demand. However, Company is not responsible for any wrong application of the product.



JK Cement Works (Fujairah) FZC

Marketing office:

The Citadel Tower
Office No. 2007-2008, Business Bay,
Dubai (UAE) P.O. Box 123630

Tel: +971 4 2797306, Fax: +971 4 4203906
sales.fuja@jkcement.com

